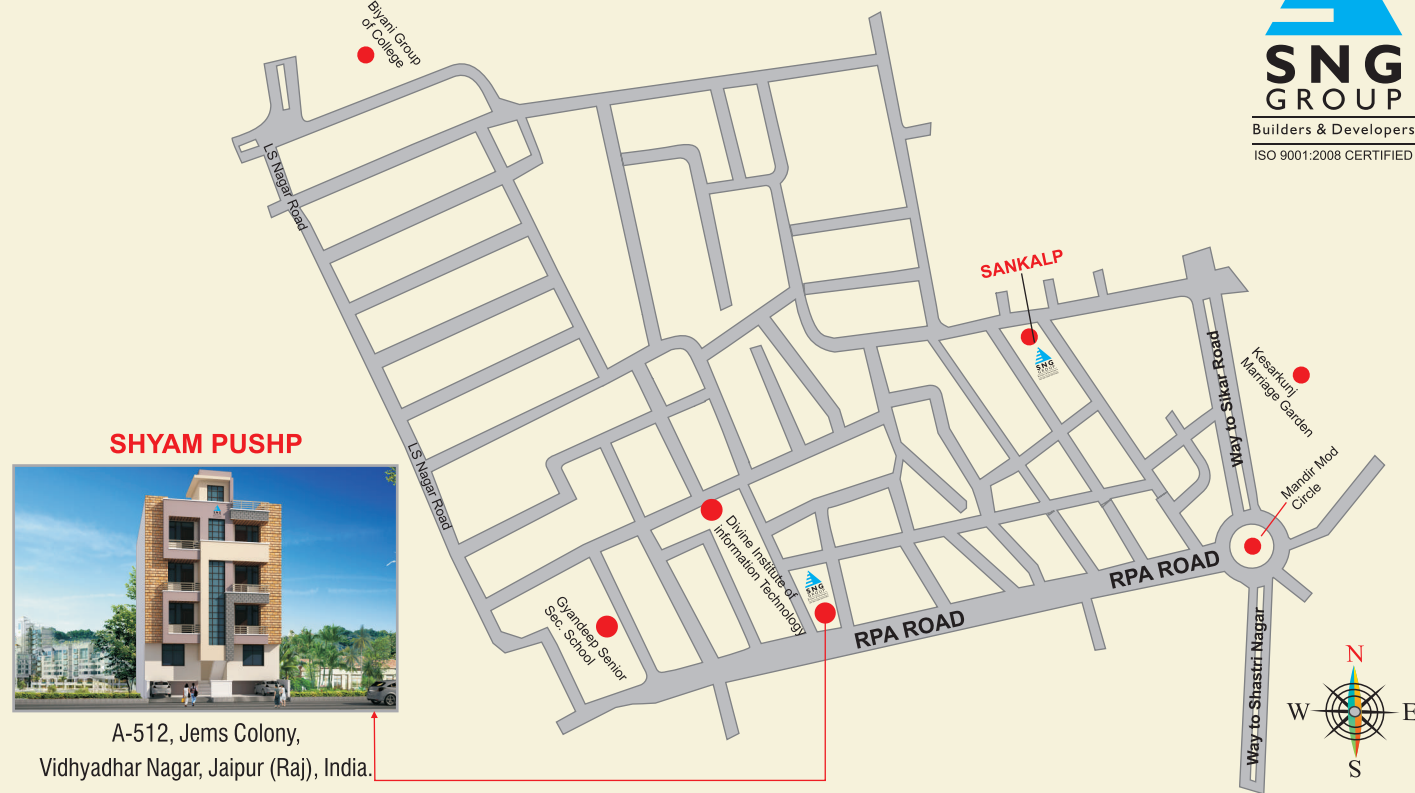


## Location MAP



# SHYAM PUSHP

2 BHK PREMIUM RESIDENTIAL APARTMENTS

## YOUR HOME, YOUR PRIDE

### FEATHERS IN THE CROWN OF SNG GROUP

- We Have Space For Everybody's Dream With More Than **45 Projects Across Rajasthan**
- Rajasthan Government's Proud Partner In Development of **Affordable Housing Under PPP Scheme at Jaipur** (Kalwada, Bhated-vatika, Bhambori) **Churu** (Sardarshahar, Agrasen Nagar - Gram Ramsara)
- Quality Always Stands Out, Even In Crowd. **SNG Group's Excellence Gets Recognized & Awarded Powerbrands GlamMe,** In June 2013, Las Vegas (USA)
- SNG Group has been awarded as **Asia's Fastest Growing Real Estate Brands 2014-2015** by WCRC Leaders Asia (World Consulting & Research Corporation) In May 2015, Singapore.
- SNG Group has been awarded for **Outstanding Contribution in the field of Real Estate by ZEE Marudhara** at the Real Estate & Architecture Award in October 2015, Jaipur (India)

#### Head Office:-

707, Paris Point, Collectorate Circle, Banipark, Jaipur (Raj.) INDIA.

#### Corporate Office:-

1<sup>st</sup> Floor, G-Business Park, D-34, Subhash Marg, C-Scheme, Jaipur (Raj.) INDIA.

**Ph:-** +91 141-5174119, 2207154, 5157999

**Email:-** info@snggroupindia.com

**Web. :-** www.snggroupindia.com

#### Site :-

A-512, Jems Colony, Vidhyadhar Nagar, Jaipur (Raj), INDIA.



Follow us On :



Finance Available From All Leading Banks

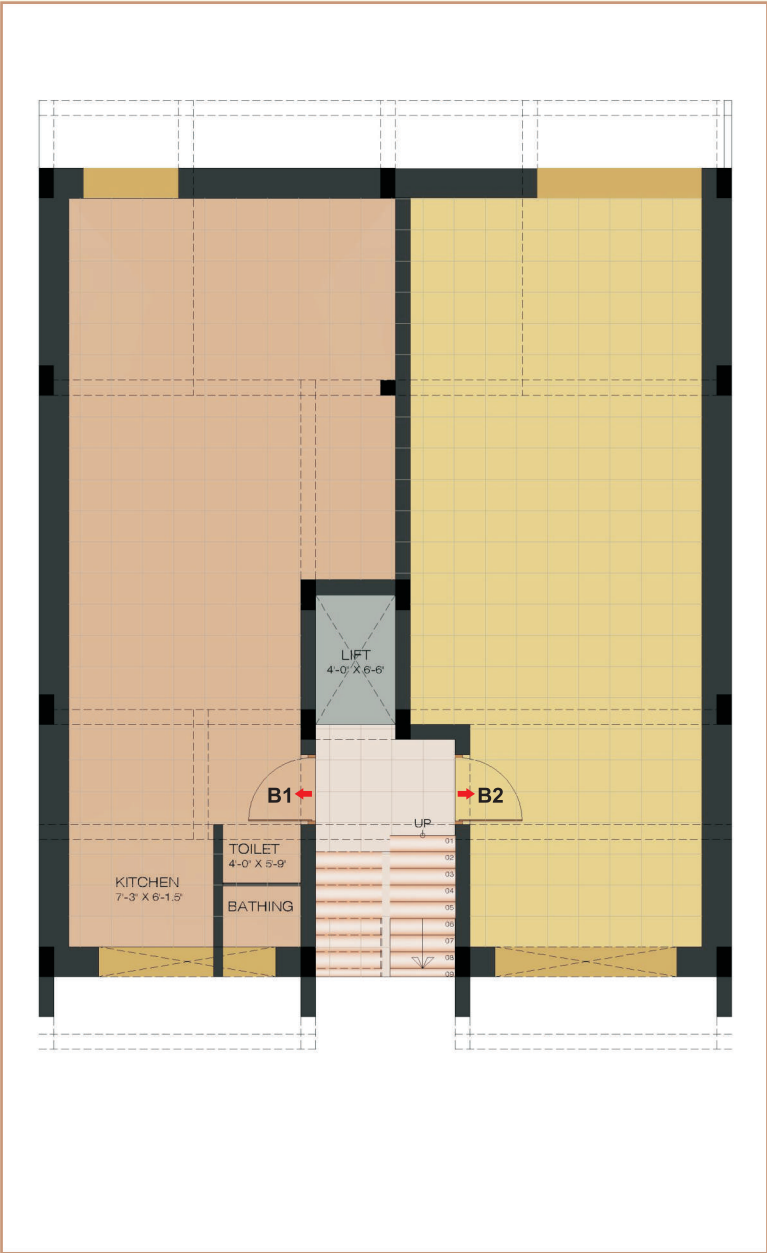
**CUSTOMER CARE NO.: +91 9314099999**

\*This brochure is not a legal document. It only describes the conceptual plan to convey the intent & purpose of the developers. The specifications & details mentioned in this brochure are tentative & are subject to change at the sole discretion of the developers and/or the architect.





BASEMENT FLOOR PLAN



BASEMENT	SALEABLE AREA (SQ.FT.)
B-1	924
B-2	835



GROUND FLOOR PLAN



FLAT NO.	SIZE	SALEABLE AREA (SQ.FT.)
G-1	2 BHK	1020
G-2	2 BHK	1025



FIRST TO THIRD FLOOR PLAN



FLAT NO.	SIZE	SALEABLE AREA (SQ.FT.)
101-301	2 BHK	1070
102-302	2 BHK	1075



PROJECT SPECIFICATIONS

- STRUCTURE**  
Earthquake resistant structure.

**DOORS & WINDOWS**  
Designer flush door or equivalent. Stainless steel hardware fittings in all doors & windows. Aluminium/ wooden windows with appropriate design structure.

**FLOOR & SKIRTING**  
Premium vitrified tiles in drawing/ living/dining, master & other bedrooms. Anti skid ceramic tiles in wash rooms & balcony. Anti skid ceramic tiles/ Natural stones in lobby. Designer drive way tiles in drive way & porch. Vitrified tiles/ Marble Profile skirting in all area.

**BATH / WASHROOM**  
Designer ceramic tiles up to 7'-0" height & rest plaster with putty & water based enamel paint. European wc, wash basin with pedestal in the bathrooms. Cp fittings single lever, brushed steel finish, premium quality cp fittings of brands like jaquar /hind ware/ equivalent.

**KITCHEN**  
Semi Modular kitchen with granite counter , stainless steel sink.

**WATER SUPPLY**  
Storage tanks. Concealed plumbing in CPVC/PPR.
- LIFT**  
8 People Capacity,autodoor.

**ELECTRICAL**  
High side electrical equipment-panels etc . of requisite designed capacity.Electrical fittings & concealed copper wiring in pvc conduit. Separate meter for lighting in common areas, elevators and pumps. Adequate 16 amp. Sockets for air conditioners, geysers, etc . as per design required.

**LOBBY / PARKING**  
Impressive entrance lobby. Spacious, well designed lift lobbies on all floors. Ample open car parking.

**BALCONY & STAIRS**  
S.S. Railing.

**POP & PAINT**  
Plaster with pop & emulsion paints on all the walls.

**SECURITY & SAFETY**  
24 hrs. Security by well trained security staff.

**OPEN TERRACE**  
An exclusive common open terrace for party purpose.

**SERVICES**  
Provision for DTH.